

# SURFACE BOX

"Telescopic" made of plastic



## Design features

- Adjustable height enables fixation of street cover at the desired level
- Cap remains standing on the road surface during work
- 4° Angular offset possible, depending on level of extension
- Less hands on work during road construction
- Homogenous connection with the tarmac, minimizing frost damage
- Quiet, no rattling of street cover
- Low maintenance (no rust problems, application of grease not necessary)
- Low weight
- No loose parts
- High stability, pressure load according to DIN 3580
- Extremely durable glass fibre construction
- Temperature invariant between: -20°C up to 245°C
- DVGW certified

Accessories: see overleaf

## Material | Technical features

- **Coverlid** made of grey cast iron, bituminised
- **Surface box body** made of polyamide 66 with 30% fibre glass
- **Safety pin** made of stainless steel

Order No.	Version	Weight	
1851K	For service valves DIN 4057	4,3	
2051K	For gate valves, DIN 4056	6,8	
1950K	For below ground hydrants DIN 4055	17,8	

## Progressively height adjustable

### No. 1851K



### No. 2051K



### No. 1950K



**E. Hawle Armaturenwerke GmbH** 4840 Vöcklabruck - Austria - Wagrainstraße 13  
Tel.: +43 (0) 7672 72576 0 - Fax: +43 (0) 7672 78464 - E-Mail: hawle@hawle.at - www.hawle.com

**M 3/1**

# SURFACE BOX

## "Telescopic" made of plastic



### Assembly instructions

#### New road construction

##### Warning:

To avoid damage, surface boxes must be installed only after laying the gravel

- Lay and compact the gravel
- Position and align the surface box
- Mark location of surface box at the roadside
- Spray the surface box with a releasing agent
- Lay the bitumen binder on the ground
- Pull the surface box top approximately 2 cm above the ground and fill the surrounding base space with tarmac.
- Clean and free the surface box cover from all foreign material

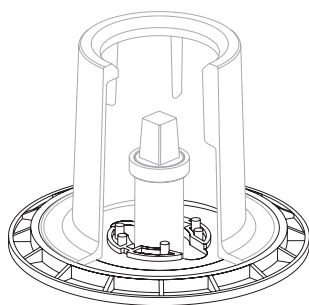
#### Replace wearing surface

- Mark position of the surface box body at the roadside, spray box with a releasing agent
- Apply the tarmac layer
- Pull the surface box approximately 2 cm above the final tarmac layer. Fill the space with tarmac
- Clean cover of surface box from all foreign material
- Roll the tarmac surrounding the surface box
- Immediately loosen and clean the surface box and cap

### Suitable accessories

- **Base plate** made of recycled-plastic

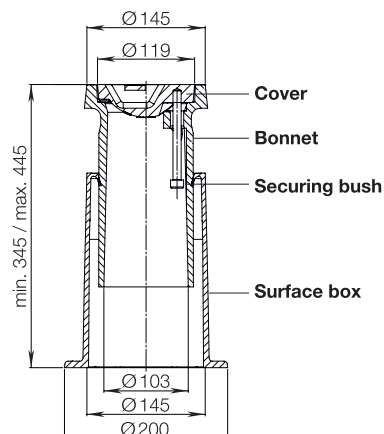
Robust and stable  
Easy assembly  
Low weight  
Non-degradable



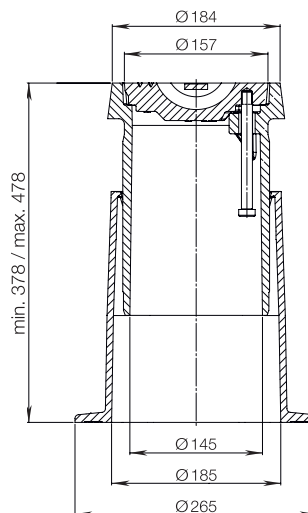
Order No.	Suitable for surface box acc. to	Weight
3481	Valve DIN 4056 and service valves DIN 4057	0,6
3482	DIN 4055 for below ground hydrants	2,0

see page M 3/7

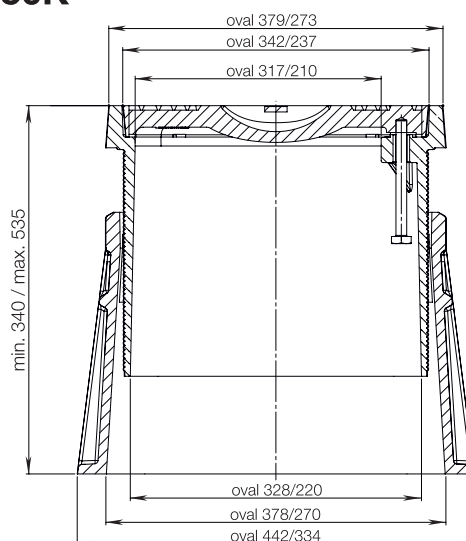
### No. 1851K



### No. 2051K



### No. 1950K



M 3/2



**E. Hawle Armaturenwerke GmbH** 4840 Vöcklabruck - Austria - Wagrainstraße 13  
Tel.: +43 (0) 7672 72576 0 - Fax: +43 (0) 7672 78464 - E-Mail: hawle@hawle.at - www.hawle.com