

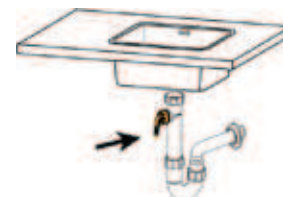


**Plastic elbow hose connector**

- ▶ for washing machine drain hose
- ▶ with nozzle and connecting nut
- ▶ flat sealing
- ▶ with gasket

manufactured in accordance to DIN EN 274

Article no.	PU	PU	PU	Colour	Ø	Size:
2246	10	200		white	1/2" (14-19 mm)	3/4"
2250	10	200		white	3/4" (19-21 mm)	1"



**Rubber feed hoses for washing machines**

Working pressure: 20 bar, splitting pressure 60 bar, for hot and cold water. One side has a straight plastic connection 3/4", the other side has a plastic elbow hose connection 3/4", completely installed, with 2 gaskets.

Packed in a plastic bag.

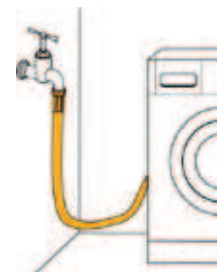
Article no.	PU	PU	PU	Colour	Size:	Intern.-Ø:	Wall thickness:	Length:
1322	10	300		grey	3/8"	10 mm	3,5 mm	1500 mm
1339	10	300		grey	3/8"	10 mm	3,5 mm	2000 mm
1323	10	300		grey	3/8"	10 mm	3,5 mm	2500 mm
1309	10	300		grey	3/8"	10 mm	3,5 mm	3500 mm
1324	10	300		grey	1/2"	13 mm	3,5 mm	1500 mm
1316	10	300		grey	1/2"	13 mm	3,5 mm	2000 mm
1325	10	300		grey	1/2"	13 mm	3,5 mm	2500 mm
1326	10	150		grey	1/2"	13 mm	3,5 mm	3500 mm



**Rubber feed hoses for washing machines**

Working pressure: 20 bar, splitting pressure 60 bar, for hot and cold water. On both sides with straight plastic connection 3/4", completely installed, with 2 gaskets.

Article no.	PU	PU	PU	Colour	Size:	Intern.-Ø:	Wall thickness:	Length:
1300	10	560		grey	3/8"	10 mm	3,5 mm	1500 mm
1301	10	300		grey	3/8"	10 mm	3,5 mm	2500 mm



**Rubber feed hose for washing machines**

Working pressure: 20 bar, splitting pressure 60 bar, for hot and cold water. One side has a metal connection 3/4", the other side has a metal nut elbow connection 3/4", completely installed, with 2 gaskets.

NEW: The hose is packed in a plastic bag.

Article no.	PU	PU	PU	Colour	Size:	Intern.-Ø:	Wall thickness:	Length:
1070	10	560		grey	3/8"	10 mm	3,5 mm	1500 mm
1071	10	300		grey	3/8"	10 mm	3,5 mm	2000 mm
1072	10	300		grey	3/8"	10 mm	3,5 mm	2500 mm

