

PAM-GLOBAL S

Pipe

DESCRIPTION

Standard range providing complete drainage solutions for transporting fluid waste and rainwater through buildings. High-quality cast iron pipes suitable for standard use applications. By their material and design, PAM GLOBAL S pipes are totally and indefinitely recyclable without loss of property.

RECOMMENDED USE

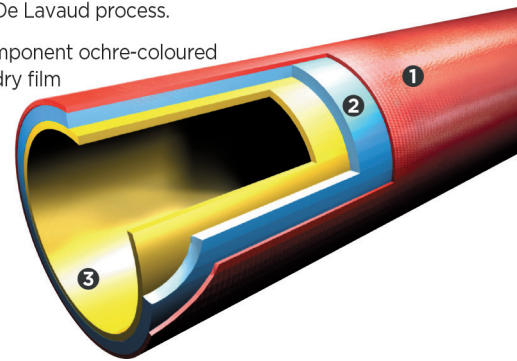
- Rainwater
- Valve water
- Wastewater

STANDARDS & APPROVALS

- Industry Product Standards:
 - DIN EN 877
- Acoustic Performance: $L_{sc} \leq 10$ dB(A) & $LaA = 47$ dB(A) according to EN 14366 with 2L/s.
- Range fire classification: A1

Coatings:

- 1 **External coating:** red-brown, anti-corrosive acrylic primer paint, average dry film thickness 40 μ m.
- 2 Cast-iron made with the De Lavaud process.
- 3 **Internal coating:** two-component ochre-coloured epoxy coating, average dry film thickness of 130 μ m.

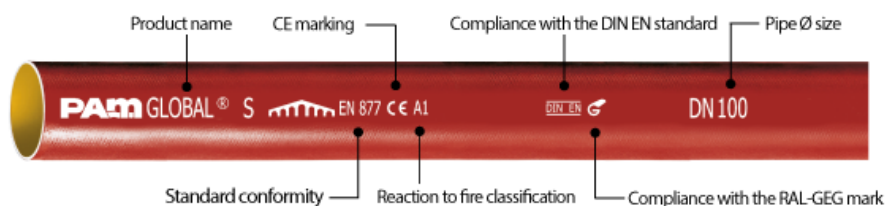


TECHNICAL FEATURES

- Hot water resistance: 24h at 95°C.
- Thermal cycle resistance: 1500 cycles between 15°C and 93°C.
- Chemical resistance for $2 \leq pH \leq 12$.
- Salt spray resistance internal coating: more than 350 h.

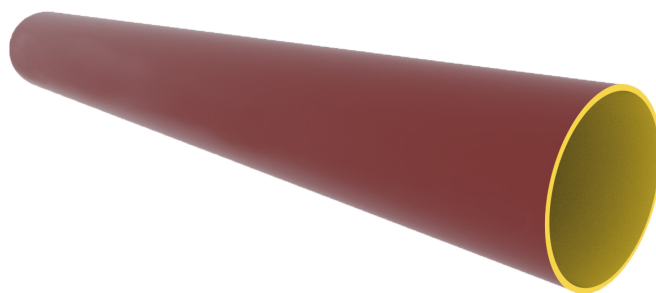
ENVIRONMENTAL DATA

- Percentage of Recycled Content: 99 %
- Recycling Information: Cast iron is 100% recyclable through the existing recycling industrial network. Data source: Environmental Product Declaration S-P-02013



PAM-GLOBAL S

Pipe



DN	L	H	W	Weight	Product Code
50	3000	58	58	12.9	156361
75	3000	83	83	18.8	156550
100	3000	110	110	25.1	156561
125	3000	135	135	35.3	156734
150	3000	160	160	42.1	156825
200	3000	210	210	69.1	156949
250	3000	274	274	99.5	157048
300	3000	326	326	129.4	157113
400	2800	429	429	167.5	216735
400	3000	429	429	179.5	157171

All dimensions are in mm and nominal weights are in kg

This document is provided for information purposes only and our company reserves the right to modify the information contained herein at any time. Our company declines all responsibility in the event of the use or installation of materials that do not comply with the rules prescribed in this document as well as with the standards, the technical documents and the applicable professional standards. Any orders placed will be subject to our General Terms and Conditions of Sale, available on request. The drawings and/or images are the exclusive property of Saint-Gobain PAM and are confidential. They must not be reproduced or disclosed to any third party without written consent. They may only be used for the purpose for which they were issued and are returnable on request.

Saint-Gobain PAM Bâtiment