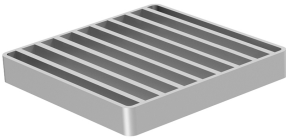
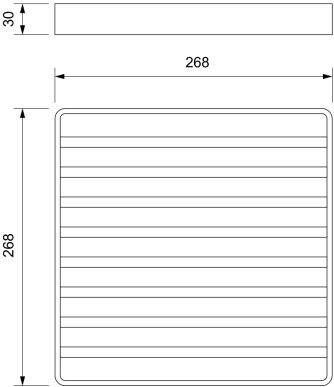


ACO hygienic ladder grating

Product information

ACO Product benefits

- Fully inspectable and cleanable
 - Full drainability
 - Internal radii equal or larger than 3 mm
 - Fully welded hygienic joints
 - Fully electropolished
-
- BIM models are available in ACO Building Drainage BIM Revit libraries
 - Hygienic design following EN 1672, EN ISO 14159 and EHEDG document 8, 13 and 44
 - Certified according to EN 1253-1
 - Slip resistant solution available (R11)



Item Technical Data 408045

| Slip resistant | Gully top size compatibility | Grating dimensions | Class | Material |
|-------------------------|---------------------------------|--------------------|-------|----------|
| | | Size | | |
| | | [mm] | | |
| Without slip resistance | Gully top size: 300 x 300 mm | 268 x 268 | N 250 | 1.4301 |