

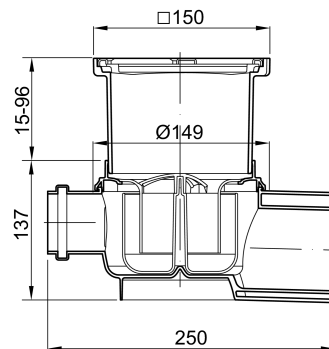
# Complete gullies, socket inclination: 1.5°

## Product information for the product group

### ACO Product benefits

- Retrofit clamping flange
- Optimum cleaning option
- Adjustable height thin bed seal


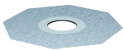
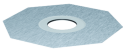
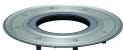

- Gully bodies DN 70/DN 100
- Made of plastic (Polypropylen)
- Tested to DIN EN 1253-1
- With bracket/connecting rim
- With removable foul air trap
  - Water trap depth: 50 mm
- With integrated seal to seal the flow gap between gully body and top section
- With plastic top section
  - Frame dimensions: 150 x 150 mm
- Slot grating made from stainless steel
  - Load class: K 3
  - Slot width: 8 mm
- With protective cover added during installation



## Item Technical Data 2700.00.77

Nominal width	Version	Side inlet	Recess [mm]	Flow rate [l/s]	Height- adjustability [mm]	Weight [kg]
DN 70/DN 100	Standard	With lateral inlet	200 x 350	1.6	15 – 96	1.0

## Accessories

	Description	Used with	Weight	PU	Item number
			[kg]	[piece]	
	<b>Extension</b> <ul style="list-style-type: none"> <li>■ Made of plastic</li> <li>■ Suitable for taking plastic top sections and clamping flanges</li> <li>■ With lip seal</li> <li>■ For deeper installation of floor gullies</li> </ul>	<ul style="list-style-type: none"> <li>■ All Easyflow floor drains</li> <li>■ Top sections <ul style="list-style-type: none"> <li>□ Socket diameter 125 mm</li> </ul> </li> <li>■ Walk-in with gully sockets</li> </ul>	0.3		2040.00.00
	<b>Thin-bed flange</b> <ul style="list-style-type: none"> <li>■ Plastic flange with sprayed-on fleece</li> <li>■ Suitable for taking liquid sealants added on-site using thin bed process</li> </ul>	<ul style="list-style-type: none"> <li>■ All Easyflow top sections <ul style="list-style-type: none"> <li>□ 2500.77.11</li> <li>□ 2700.77.11</li> <li>□ 2700.77.12</li> </ul> </li> <li>■ Top section with socket diameter 125 mm</li> </ul>	0.2		2040.00.01
	<b>Thin-bed flange</b> <ul style="list-style-type: none"> <li>■ Flange made of plastic with sprayed on non-woven material</li> <li>■ Suitable for holding liquid seals applied on site using the thin bed method</li> </ul>	<ul style="list-style-type: none"> <li>■ All Easyflow top sections <ul style="list-style-type: none"> <li>□ 2500.77.11.</li> <li>□ 2700.77.11</li> <li>□ 2700.77.12</li> </ul> </li> <li>■ Top sections with socket diameter: 125 mm</li> </ul>	0.2	4	679945
	<b>Compressed seal flange</b> <ul style="list-style-type: none"> <li>■ Plastic flange</li> <li>■ Loose flange made from stainless steel</li> <li>■ Suitable for taking sealants foils added on-site for sealing layers for point drainage</li> </ul>	<ul style="list-style-type: none"> <li>■ All Easyflow floor drains</li> </ul>	0.6		2040.00.02
	<b>Odour stop</b> <ul style="list-style-type: none"> <li>■ Prevents unpleasant odours from the sewage system, irrespective of the water seal height</li> </ul>	<ul style="list-style-type: none"> <li>■ Floor gullies, Easyflow <ul style="list-style-type: none"> <li>□ Standard</li> <li>□ DN 70/DN 100</li> </ul> </li> </ul>	0.1		2000.00.07

You can find further accessories under → <https://www.buildingdrainage.aco/search/?q=2700.00.77>