



## Data sheet

### Hydraulic data

Maximum operating pressure $P_N$	10 bar
Head max $H_{\max}$	0.0 m
Flow max $Q_{\max}$	42.0 m <sup>3</sup> /h
Minimum suction head at 50 °C $m$	7 m
Minimum suction head at 95 °C $m$	15 m
Minimum suction head at 110 °C	23 m
Min. fluid temperature $T_{\min}$	-20 °C
Max. fluid temperature $T_{\max}$	110 °C
Min. ambient temperature $T_{\min}$	-20 °C
Max. ambient temperature $T_{\max}$	40 °C

### Motor data

Energy efficiency index (EEI)	0.20
Mains connection	1~230 V $\pm$ 10%, 50/60 Hz
Min current $I_{\min}$	0.3 A
Max current $I_{\max}$	3.5 A
Rated power $P_2$	650 W
Min. speed $n_{\min}$	800 1/min
Max. speed $n_{\max}$	2800 1/min
Power consumption $P_{1 \min}$	40 W
Power consumption $P_{1 \max}$	800 W
Interference emission	EN 61800-3;2004+A1;2012 /residential area (C1)
Interference immunity	EN 61800-3;2004+A1;2012 /industrial environment (C2)
Threaded cable connection	2 x M20x1.5
Insulation class	F
Protection class	IPX4D

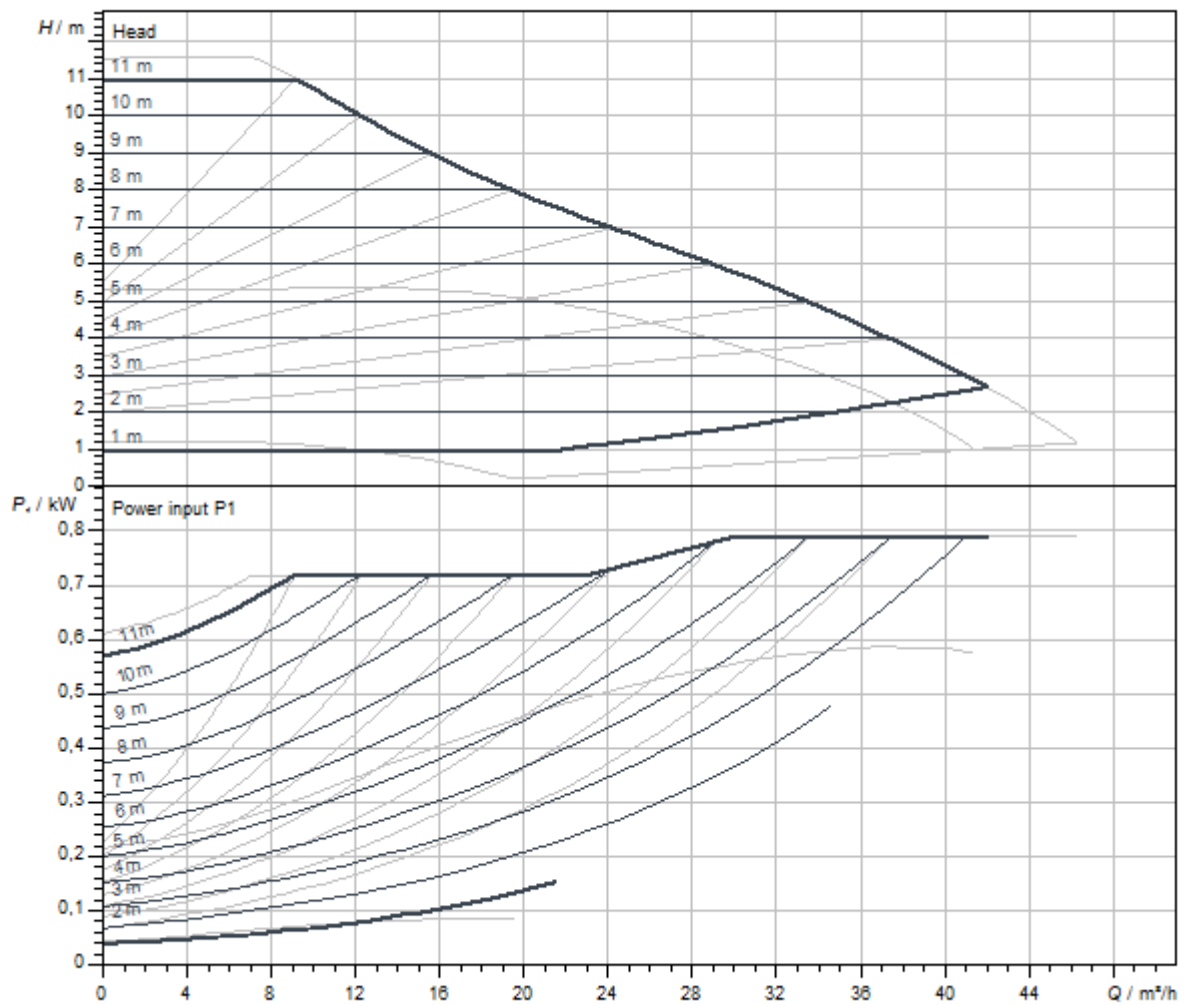
### Materials

Pump housing	Grey cast iron
Impeller	PPE/PS-GF30
Shaft	Stainless steel
Bearing	Carbon-graphite

## Installation dimensions

Pipe connection on the discharge side <i>DNd</i>	DN 65
Pipe connection on the suction side <i>DNs</i>	DN 65
Port-to-port length <i>L0</i>	340 mm

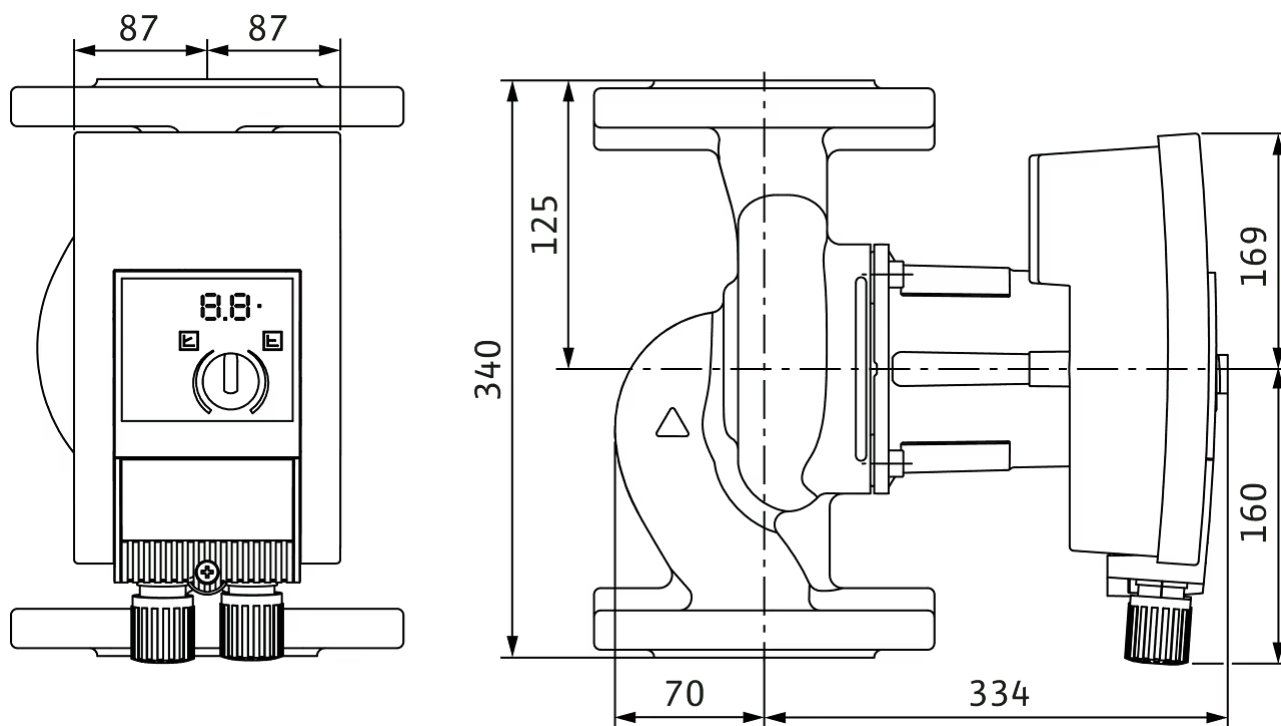
## Pump curves



Fluid media	Water 100 %
Fluid temperature <i>T</i>	20,00 °C
speed at duty point <i>n hydr. @ OP</i>	2.214 1/min

## Dimensions and dimensions drawings

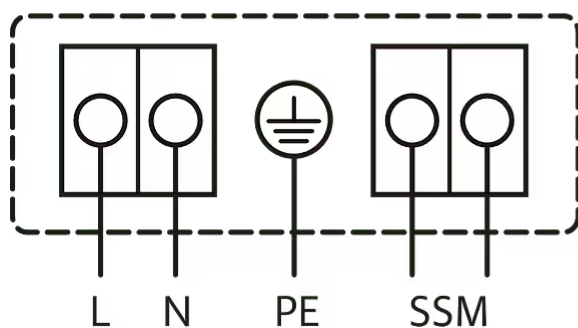
### Yonos MAXO 65/0,5-12



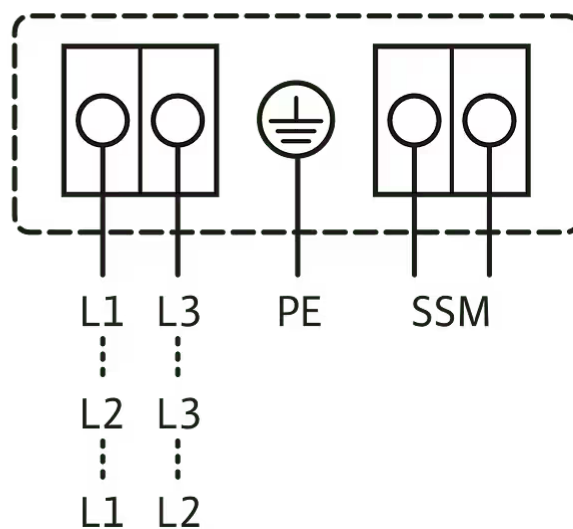
## Wiring diagram

1~230V, 50/60 Hz

1~ 230 V, 50/60 Hz



3~230 V, 50/60 Hz



Collective fault signal

SSM:

(NC contact in accordance with VDI 3814, load capacity 1 A, 250 V ~)

Standard: 1~230 V, 50/60 Hz

Option: 3~230 V, 50/60 Hz

## Tender text

High efficiency pump Wilo-Yonos MAXO electronically controlled,

Glandless circulator, synchronous motor according to ECM technology and integrated power control for continuous differential pressure control. Can be used for all heating, ventilation and air-conditioning applications.

Standard-equipped with:

- > Preselectable control modes for optimum load adjustment:  $\Delta p$ -c (differential pressure constant),  $\Delta p$ -v (differential pressure variable)
- > 3 speed stages ( $n$  = constant)

- > LED for setting the setpoint and displaying error messages
- > Electrical connection with the Wilo plug
- > Fault lamp and contact for collective fault signal

For flange-end pumps - flange versions:

- > Standard version for pumps DN 32 to DN 65: PN 6/10 combination flange (PN 16 flange according to EN 1092-2) for PN 6 and PN 16 counter flanges
- > Standard version for DN 80/DN 100 pumps: PN 6 flange (designed for PN 16 according to EN 1092-2) for PN 6 counter flange

## Operating Data

Fluid temperature $T$	-20 °C
Ambient temperature $T$	-20 °C
Maximum operating pressure $PN$	10 bar
Minimum suction head at 50 °C $m$	7 m
Minimum suction head at 95 °C $m$	15 m
Minimum suction head at 110 °C	23 m

## Motor data

Energy efficiency index (EEI)	0.20
Interference emission	EN 61800-3;2004+A1;2012 /residential area (C1)
Interference immunity	EN 61800-3;2004+A1;2012 /industrial environment (C2)
Mains connection	1~230 V, 50/60 Hz
Power consumption $P_{1\max}$	800 W
Min. speed $n_{\min}$	800 1/min
Max. speed $n_{\max}$	2800 1/min
Protection class motor	IPX4D
Threaded cable connection	2 x M20x1.5


## Materials

Pump housing	Grey cast iron
Impeller	PPE/PS-GF30
Shaft	Stainless steel
Bearing	Carbon-graphite

## Installation dimensions

Pipe connection on the suction side $DNs$	DN 65
Pipe connection on the discharge side $DNd$	DN 65
Port-to-port length $L0$	340 mm

## Ordering information

Brand	Wilo
Product description	Yonos MAXO 65/0,5-12 PN 6/10
Net weight, approx. $m$	25.8 kg
Article number	<b>2120654</b> 

## Services

With Wilo as your partner, you can not only be sure of choosing high-quality product solutions, but also of benefiting from a comprehensive, worry-free package of well thought-out services. We collaborate to develop a service concept tailored to your individual needs; with our expertise and personal consultancy, we make sure that the

operation of your systems is as energy-efficient, reliable and economical as possible. All the while our competent Wilo service technicians are ready to assist you with fast, reliable and on-time support.

### Recommended services

Wilo-Live Assistant Service	2216415
System Optimisation Glandless pumps	2219250
Energy Solutions Glandless pumps	2219285

### More suitable services

Extended warranty glandless pumps	2219589
Supervision Glandless pumps	2219320
Installation Glandless pumps	2219355
Commissioning Glandless pumps	2219390
Maintenance BASIC Glandless pumps	2219530
Maintenance COMFORT Glandless pumps	2219416
Maintenance PREMIUM Glandless pumps	2219545
Repair Glandless pumps	2219609