



Data sheet

Hydraulic data

| | |
|-------------------------------------|------------------------|
| Maximum operating pressure P_N | 10 bar |
| Head max H_{\max} | 0.0 m |
| Flow max Q_{\max} | 11.0 m ³ /h |
| Minimum suction head at 50 °C m | 3 m |
| Minimum suction head at 95 °C m | 10 m |
| Minimum suction head at 110 °C | 16 m |
| Min. fluid temperature T_{\min} | -20 °C |
| Max. fluid temperature T_{\max} | 110 °C |
| Min. ambient temperature T_{\min} | -20 °C |
| Max. ambient temperature T_{\max} | 40 °C |

Motor data

| | |
|--------------------------------|--|
| Energy efficiency index (EEI) | 0.20 |
| Mains connection | 1~230 V \pm 10%, 50/60 Hz |
| Min current I_{\min} | 0.09 A |
| Max current I_{\max} | 1 A |
| Rated power P_2 | 90 W |
| Min. speed n_{\min} | 1200 1/min |
| Max. speed n_{\max} | 3700 1/min |
| Power consumption $P_{1 \min}$ | 7 W |
| Power consumption $P_{1 \max}$ | 120 W |
| Interference emission | EN 61800-3;2004+A1;2012 /residential area (C1) |
| Interference immunity | EN 61800-3;2004+A1;2012 /industrial environment (C2) |
| Threaded cable connection | 2 x M20x1.5 |
| Insulation class | F |
| Protection class | IPX4D |

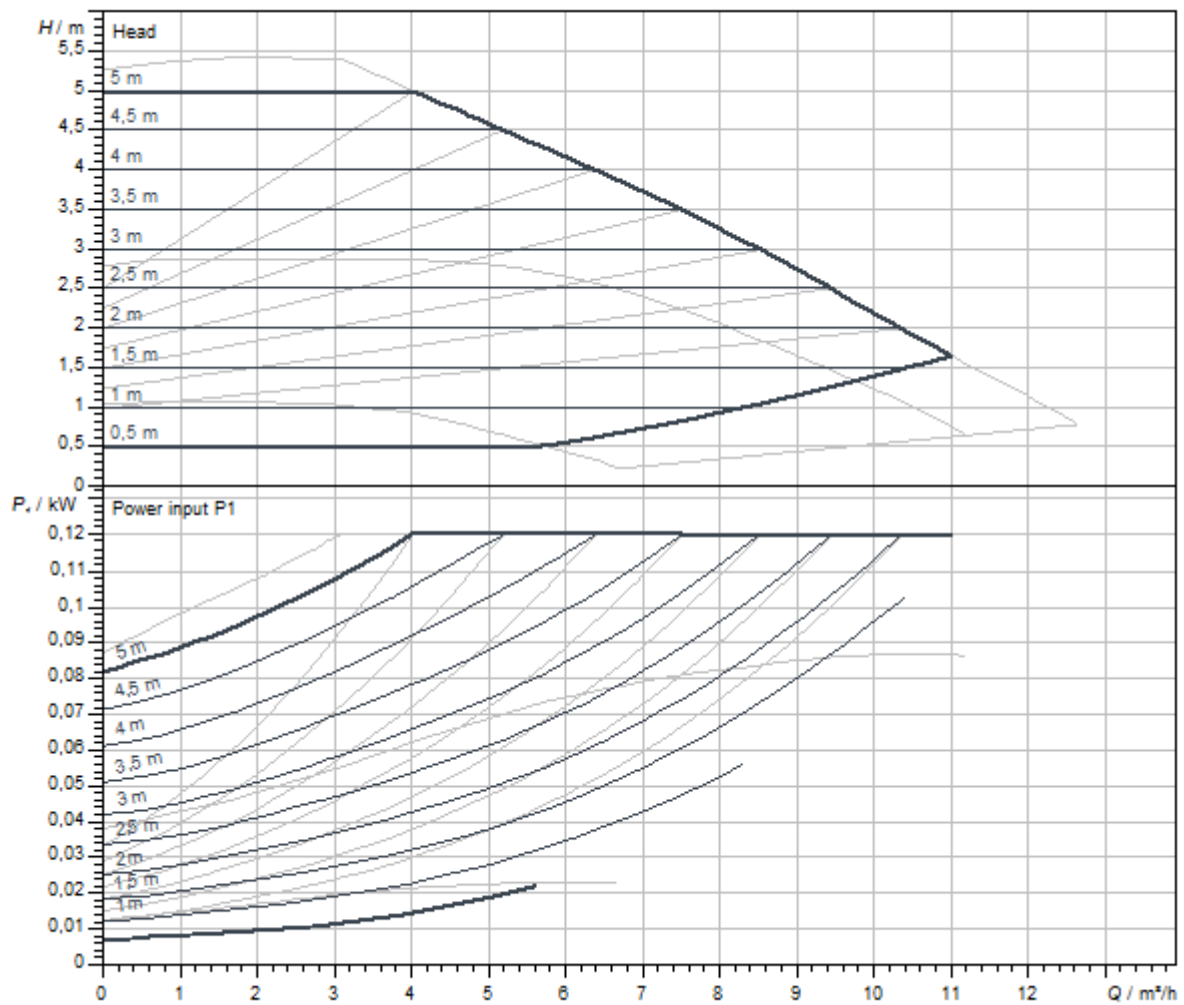
Materials

| | |
|--------------|-----------------|
| Pump housing | Grey cast iron |
| Impeller | PPS-GF40 |
| Shaft | Stainless steel |
| Bearing | Carbon-graphite |

Installation dimensions

| | |
|--|--------|
| Pipe connection on the discharge side <i>DNd</i> | DN 40 |
| Pipe connection on the suction side <i>DNs</i> | DN 40 |
| Port-to-port length <i>L0</i> | 220 mm |

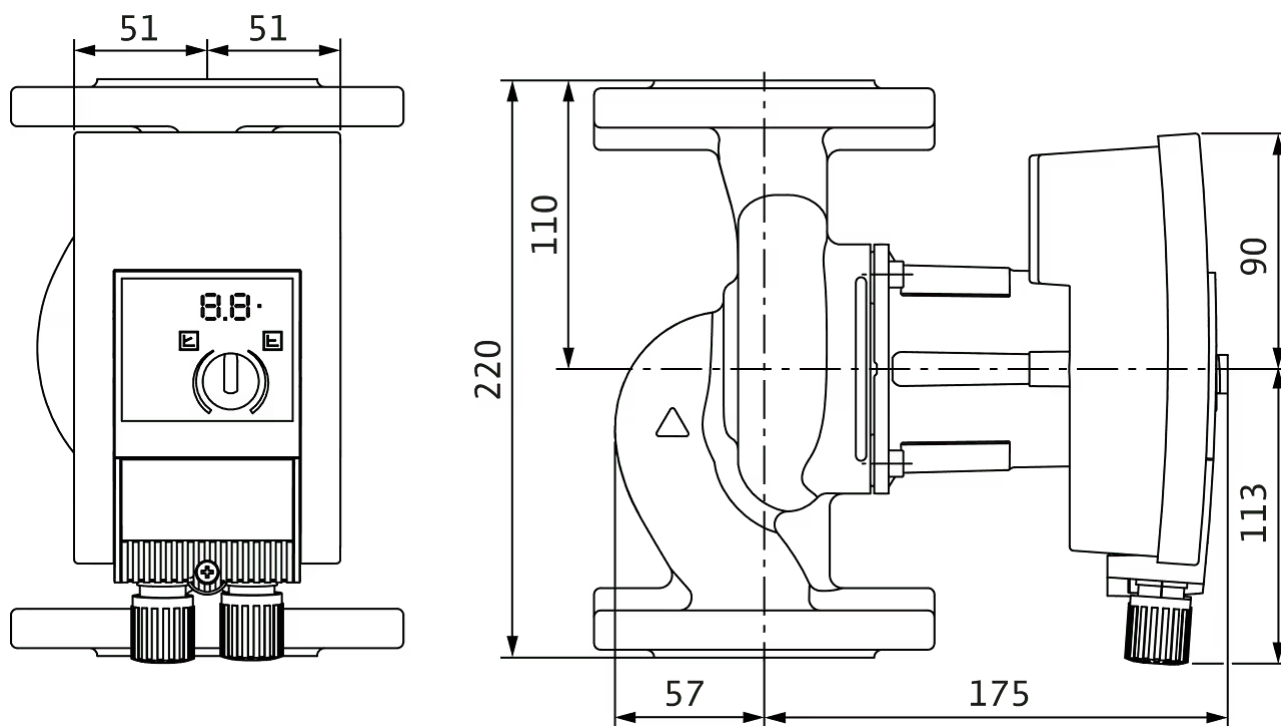
Pump curves



| | |
|---|-------------|
| Fluid media | Water 100 % |
| Fluid temperature <i>T</i> | 20,00 °C |
| speed at duty point <i>n hydr. @ OP</i> | 3.270 1/min |

Dimensions and dimensions drawings

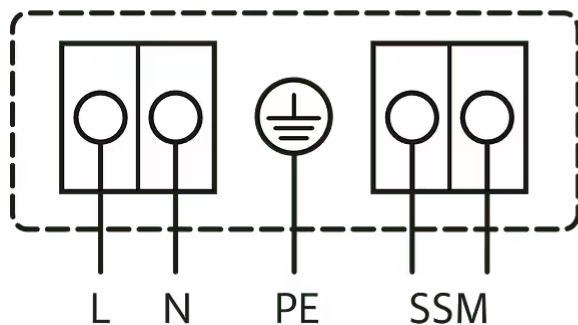
Yonos MAXO 40/0,5-4



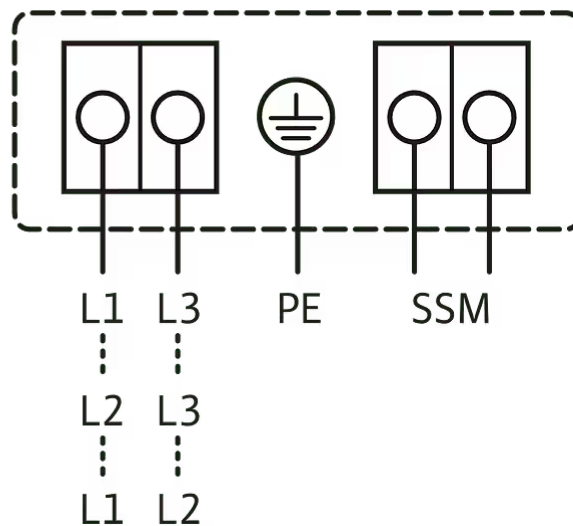
Wiring diagram

1~230V, 50/60 Hz

1~ 230 V, 50/60 Hz



3~230 V, 50/60 Hz



Collective fault signal

SSM:

(NC contact in accordance with VDI 3814, load capacity 1 A, 250 V ~)

Standard: 1~230 V, 50/60 Hz

Option: 3~230 V, 50/60 Hz

Tender text

High efficiency pump Wilo-Yonos MAXO electronically controlled,

Glandless circulator, synchronous motor according to ECM technology and integrated power control for continuous differential pressure control. Can be used for all heating, ventilation and air-conditioning applications.

Standard-equipped with:

- Preselectable control modes for optimum load adjustment: Δp -c (differential pressure constant), Δp -v (differential pressure variable)
- 3 speed stages (n = constant)

- LED for setting the setpoint and displaying error messages
- Electrical connection with the Wilo plug
- Fault lamp and contact for collective fault signal

For flange-end pumps - flange versions:

- Standard version for pumps DN 32 to DN 65: PN 6/10 combination flange (PN 16 flange according to EN 1092-2) for PN 6 and PN 16 counter flanges
- Standard version for DN 80/DN 100 pumps: PN 6 flange (designed for PN 16 according to EN 1092-2) for PN 6 counter flange

Operating Data

| | |
|-----------------------------------|--------|
| Fluid temperature T | -20 °C |
| Ambient temperature T | -20 °C |
| Maximum operating pressure PN | 10 bar |
| Minimum suction head at 50 °C m | 3 m |
| Minimum suction head at 95 °C m | 10 m |
| Minimum suction head at 110 °C | 16 m |

Motor data

| | |
|-------------------------------|--|
| Energy efficiency index (EEI) | 0.20 |
| Interference emission | EN 61800-3;2004+A1;2012 /residential area (C1) |
| Interference immunity | EN 61800-3;2004+A1;2012 /industrial environment (C2) |
| Mains connection | 1~230 V, 50/60 Hz |
| Power consumption $P_{1\max}$ | 120 W |
| Min. speed n_{\min} | 1200 1/min |
| Max. speed n_{\max} | 3700 1/min |
| Protection class motor | IPX4D |
| Threaded cable connection | 2 x M20x1.5 |


Materials

| | |
|--------------|-----------------|
| Pump housing | Grey cast iron |
| Impeller | PPS-GF40 |
| Shaft | Stainless steel |
| Bearing | Carbon-graphite |

Installation dimensions

| | |
|---|--------|
| Pipe connection on the suction side DNs | DN 40 |
| Pipe connection on the discharge side DNd | DN 40 |
| Port-to-port length $L0$ | 220 mm |

Ordering information

| | |
|-------------------------|--|
| Brand | Wilo |
| Product description | Yonos MAXO 40/0,5-4 PN 6/10 |
| Net weight, approx. m | 8.6 kg |
| Article number | 2120645  |

Services

With Wilo as your partner, you can not only be sure of choosing high-quality product solutions, but also of benefiting from a comprehensive, worry-free package of well thought-out services. We collaborate to develop a service concept tailored to your individual needs; with our expertise and personal consultancy, we make sure that the

operation of your systems is as energy-efficient, reliable and economical as possible. All the while our competent Wilo service technicians are ready to assist you with fast, reliable and on-time support.

Recommended services

| | |
|-------------------------------------|---------|
| Wilo-Live Assistant Service | 2216415 |
| System Optimisation Glandless pumps | 2219250 |
| Energy Solutions Glandless pumps | 2219285 |

More suitable services

| | |
|-------------------------------------|---------|
| Extended warranty glandless pumps | 2219589 |
| Supervision Glandless pumps | 2219320 |
| Installation Glandless pumps | 2219355 |
| Commissioning Glandless pumps | 2219390 |
| Maintenance BASIC Glandless pumps | 2219530 |
| Maintenance COMFORT Glandless pumps | 2219416 |
| Maintenance PREMIUM Glandless pumps | 2219545 |
| Repair Glandless pumps | 2219609 |