



## Data sheet

### Technical data

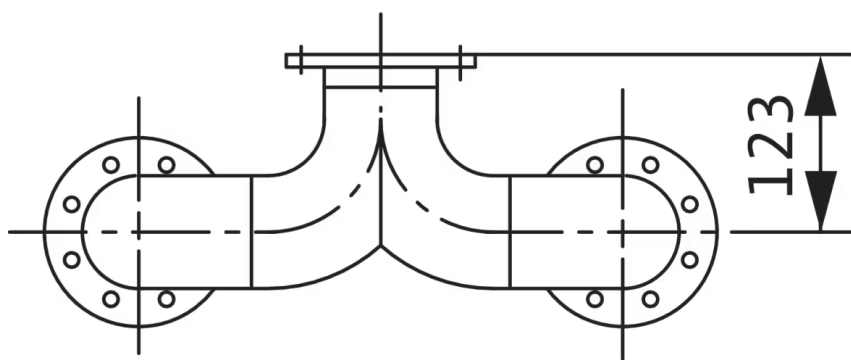
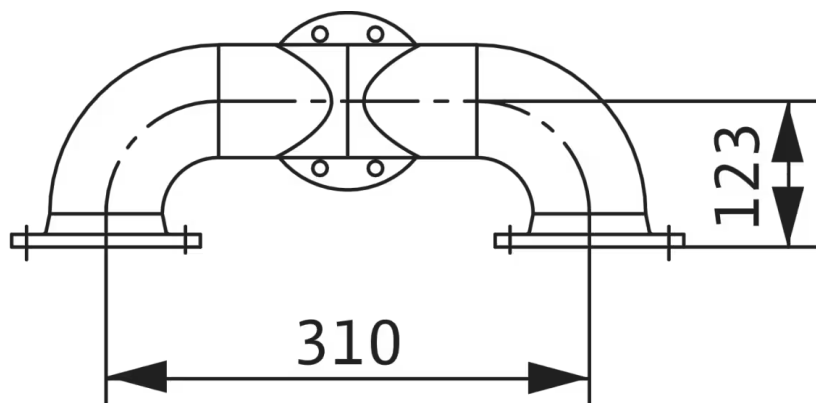
Inlet connection	DN 50
Outlet connection	DN 50
Pump connection	DN 50
Pipe connection	DN 50
Max. number of controllable pumps	2

### Materials

Material	Steel, galvanised
----------	-------------------


Dimensions and dimensions drawings

Accessoires mechanical



## Ordering information

## Product data

Brand	Wilo
Product description	Y-piece DN 50
Article number	<b>2019042</b> 
EAN number	4016322323556
Colour	grey/black
Minimum order quantity	1
Date of sales availability	2010-01-01

## Packaging

Number per layer	1
Packaging property	Transport packaging
Packaging type	Cardboard box
Pieces per pallet	1

## Dimension, weight

Length with packaging	500 mm
Length <i>L</i>	478 mm
Height with packaging	250 mm
Height <i>H</i>	208 mm
Width with packaging	250 mm
Width <i>W</i>	208 mm
Gross weight, approx. <i>m</i>	13 kg
Net weight, approx. <i>m</i>	11 kg

## Tender text

Y-piece for connecting two pressure pipes into a single pressure pipe (e.g. for dual pump systems), incl. 2 sets

mounting accessories.

## Technical data

Inlet connection	DN 50
Outlet connection	DN 50
Material	Steel, galvanised
Net weight, approx.	11 kg
Make	Wilo
Item no.	2019042