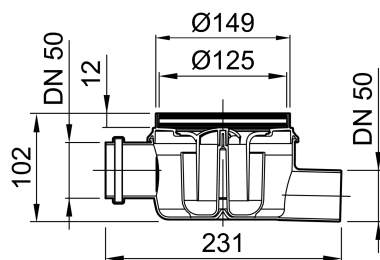


Gully bodies, socket inclination: 1.5°

Product information for the product group





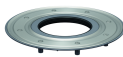
ACO Product benefits

- Gully bodies DN 50
- Made of plastic (Polypropylen)
- Tested to DIN EN 1253-1
- With bracket/connecting rim
- With removable foul air trap
- Water trap depth: 50 mm
- With integrated seal to seal the flow gap between gully body and top section
- With protective cover added during installation
- Suitable top sections
 - Standard top sections
 - Top sections for thin bed sealing
 - Top sections for customer choice of surface
- Retrofit clamping flange
- Optimum cleaning option
- Adjustable height thin bed seal

Item Technical Data 2500.00.00

Nominal width	Version	Side inlet	Recess [mm]	Description	Flow rate [l/s]	Weight [kg]
DN 50	Standard	With lateral inlet	200 x 330	■ Water trap depth: 50 mm	1.0	0.5

Accessories

	Description	Weight [kg]	Item number
	Extension <ul style="list-style-type: none"> ■ Made of plastic ■ Suitable for taking plastic top sections and clamping flanges ■ With lip seal ■ For deeper installation of floor gullies 	0.3	2040.00.00
	Thin-bed flange <ul style="list-style-type: none"> ■ Plastic flange with sprayed-on fleece ■ Suitable for taking liquid sealants added on-site using thin bed process 	0.2	2040.00.01
	Compressed seal flange <ul style="list-style-type: none"> ■ Plastic flange ■ Loose flange made from stainless steel ■ Suitable for taking sealants foils added on-site for sealing layers for point drainage 	0.6	2040.00.02

You can find further accessories under → <https://www.buildingdrainage.aco/suche/?q=2500.00.00>